

Specification:

Impedance: see above
 Open circuit input impedance @ 1kHz: 22k
 Maximum output power @ 100Hz: 2W

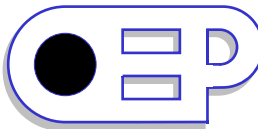
DC resistance (+/-15%):
 Primary: 560
 Secondary: 0.45

O C inductance @ 1kHz, 1V, 60mADC:
 Primary: 4H nom.

Maximum DC in primary: 60mA
 Leakage inductance: 50mH nom.
 Interwinding capacitance: 158pF nom.

Hi-Pot, primary to secondary: 1kV, 2s

Tolerance on all dimensions +/- 0.3mm unless stated otherwise

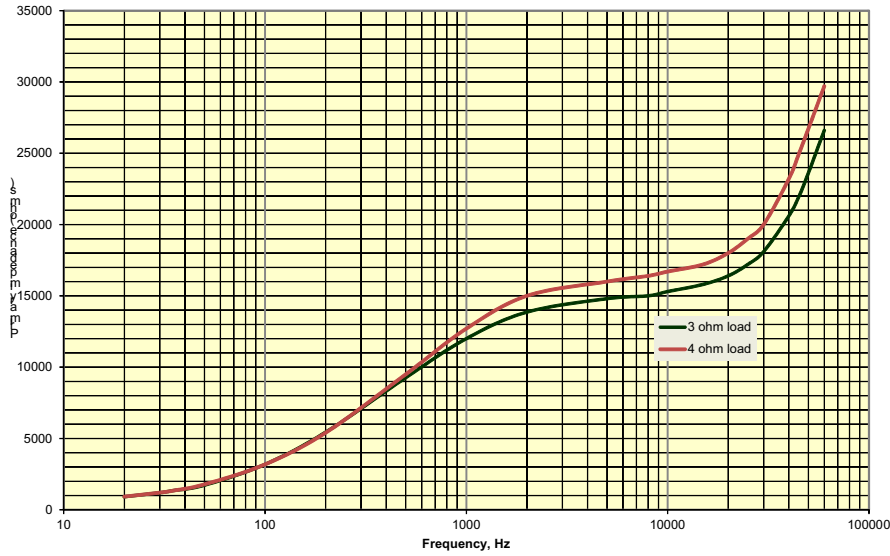


Unit 5, Oxonian Park, Langford Locks,
 Kidlington, Oxfordshire. OX5 1FP
 Tel: (01865) 855085 Fax: (01865) 855075
 Website: www.oep.co.uk

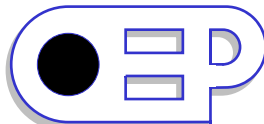
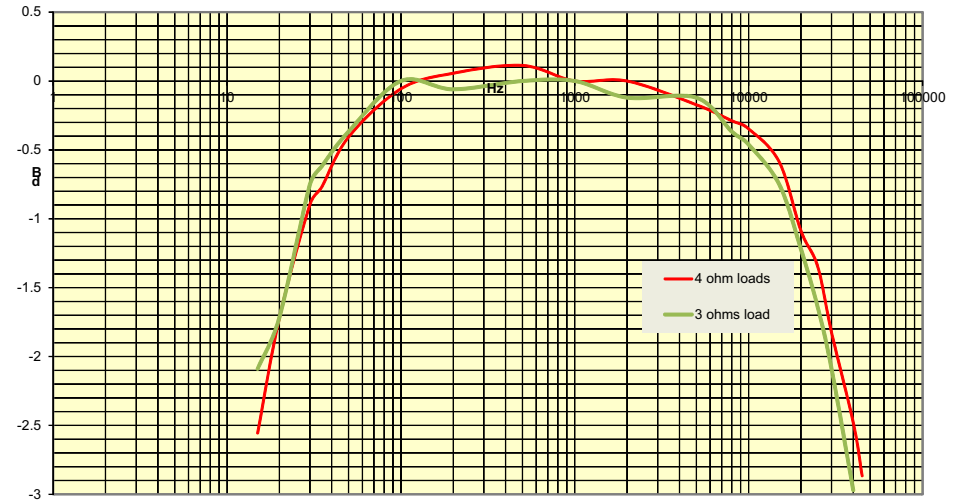
DESCRIPTION	ISSUE	DATE	DRAWN	CHECKED	DRAWING NUMBER
2W, 3 S.E. output transformer for UL41	1	31/05/17	CS		B18A011F
	2	01/06/17	CS		

Scale: 1:1 All dimensions in mm unless stated otherwise

Variation of primary impedance v frequency with fixed load on secondary



Frequency response: source 0dBu



Unit 5, Oxonian Park, Langford Locks,
Kidlington, Oxfordshire. OX5 1FP
Tel: (01865) 855085 Fax: (01865) 855075
Website: www.oep.co.uk

DESCRIPTION	ISSUE	DATE	DRAWN	CHECKED	DRAWING NUMBER
Impedance v frequency	1	31/05/17	CS		B18A011F
	2	01/06/17	CS		
Scale:1:1					
All dimensions in mm unless stated otherwise					